

# BASRA 310,000 DWT Crude Oil Tanker 4

[Contents](#)

[By Builder](#)

[By Ship Type](#)

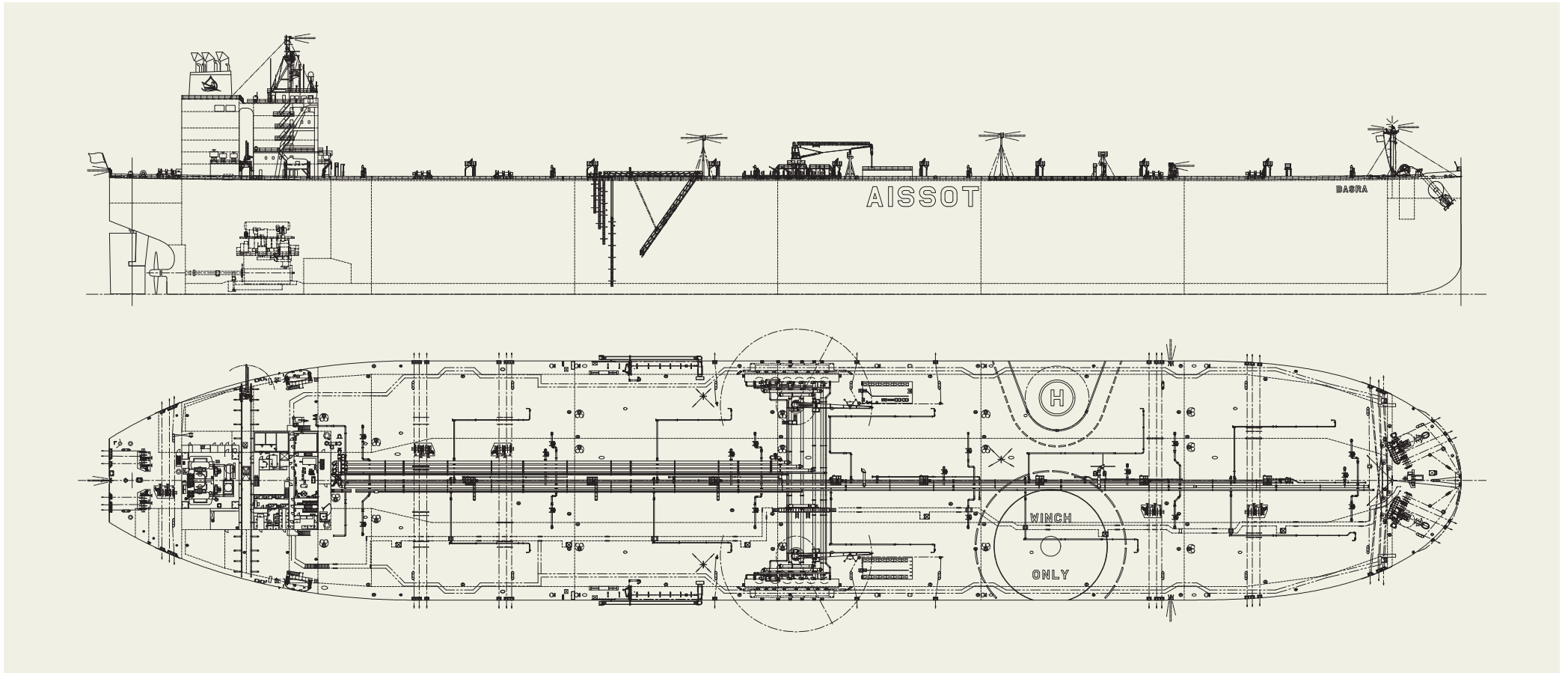


**BASRA** 310,000 DWT Crude Oil Tanker 4

Contents

By Builder

By Ship Type



**PRINCIPAL PARTICULARS**

Breadth (mld.).....	60 m	MCR (kw x rpm) .....	24,000 x 61
Depth (mld.).....	28.5 m	Speed (service).....	15.5 knots
Gross tonnage.....	160,087	Classification.....	ABS
Deadweight.....	312,965	Builder: .....	Imabari Shipbuilding Co., Ltd.

# ENEOS ENDEAVOR 311,000 DWT Crude Oil Tanker 5

[Contents](#)

[By Builder](#)

[By Ship Type](#)



# ENEOS ENDEAVOR 311,000 DWT Crude Oil Tanker 5

Contents By Builder By Ship Type

Japan Marine United Corporation (JMU) delivered "ENEOS ENDEAVOR", 311,000 DWT Crude Oil Tanker at its Ariake shipyard on 17th June 2022.

## Features

1. This is an eco-type Malacca max VLCC, which JMU has a lot of building record. Principal particulars have been optimized for transportation between Middle East and Japan passing through Malacca strait, while satisfying restrictions of domestic ports.
2. High propulsion performance was achieved by the application of lower resistance and high efficiency hull form, and optimized energy saving devices such as Super

Stream Duct®, SURF-BULB® and ALV-Fin®.

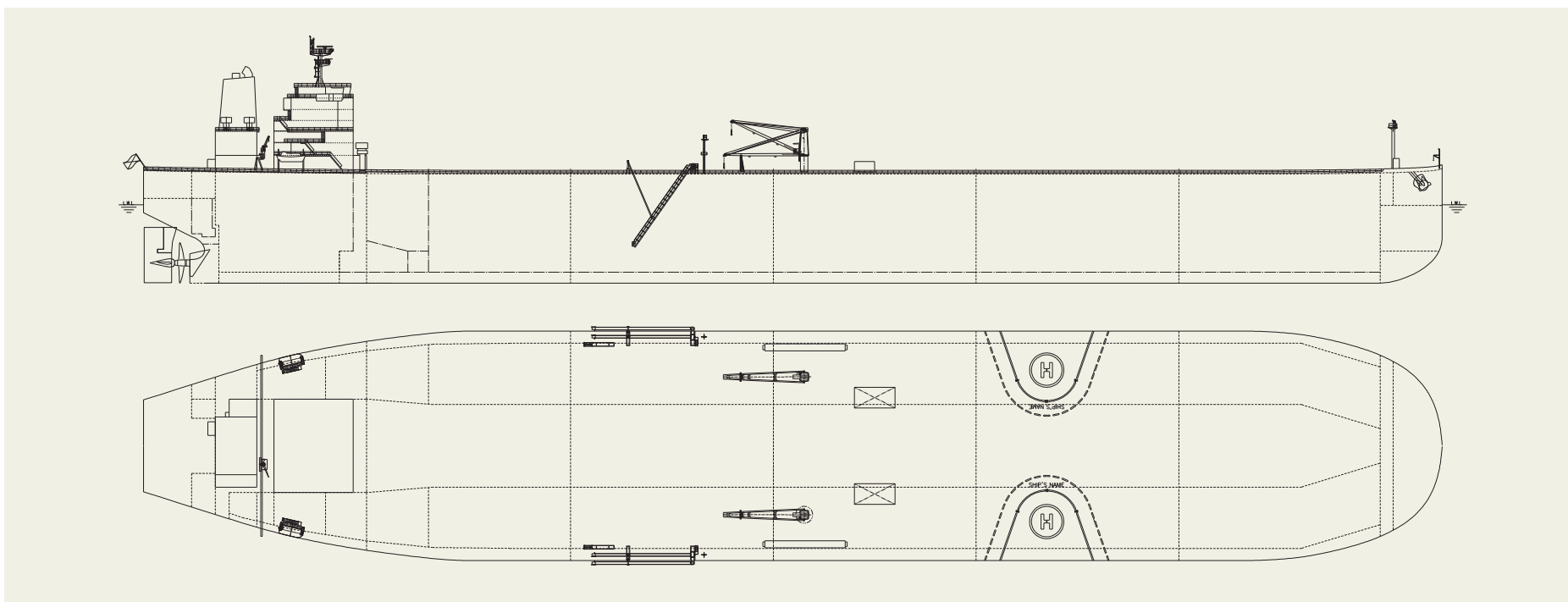
3. In addition, good sea performance was achieved by the application of the low wind resistance superstructure and unique bow shape called the "LEADGE-Bow®".

4. Furthermore, the fuel oil consumption was further improved by the application of new electronically controlled marine diesel engine, low friction paint and high efficiency propeller.

## PRINCIPAL PARTICULARS

Length (o.a.) .....	339.50 m
Breadth (mld.) .....	60.00 m
Depth (mld.) .....	28.50 m
Draft (mld.) .....	21.05 m
Gross tonnage .....	160,725

Deadweight.....	312,137
Main engine .....	WinGD W7X82
Speed (service).....	15.5 knots
Complement.....	30
Classification .....	NK
Builder.....	JMU



# OLYMPUS 301,000 DWT Crude Oil Tanker 6

[Contents](#)

[By Builder](#)

[By Ship Type](#)



# OLYMPUS 301,000 DWT Crude Oil Tanker 6

[Contents](#)     [By Builder](#)     [By Ship Type](#)

Japan Marine United Corporation (JMU) delivered "OLYMPUS", 301,000 DWT Crude Oil Tanker at its Ariake shipyard on 20th January 2023.

## Features

1. This is the 1st vessel of the newly developed crude oil Tanker called "N-VLCC" continuing the lineage of the hugely popular G-VLCC. It has been designed to provide flexibility for worldwide trade by achieving both compact hull form and largest deadweight at shallow draft and developed drastically reducing fuel oil consumption together with CO<sub>2</sub> emissions compared with existing vessels.
2. High propulsion performance was achieved by the application of lower resistance and high efficiency hull form, and optimized energy saving devices such as Super Stream Duct®, SURF-BULB® and ALV-Fin®.

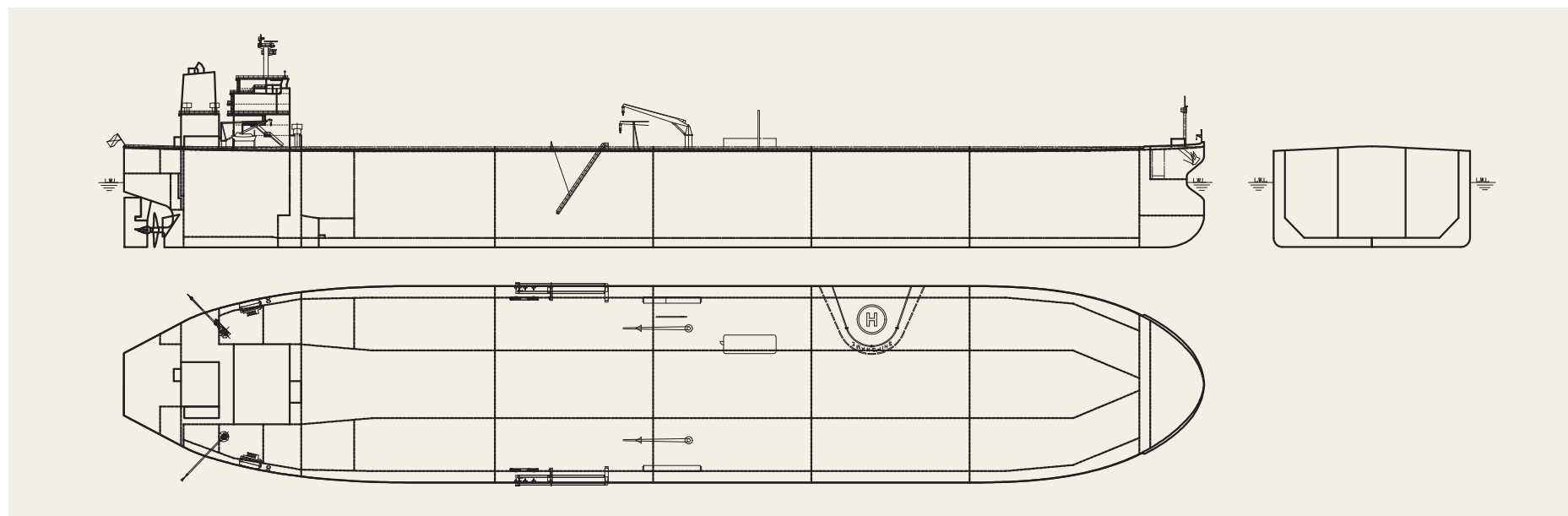
3. The unique bow shape, Ax-Bow®, can reduce the added resistance due to waves, and the well-refined shape of the superstructure can attain low wind resistance.
4. The Energy Efficiency Design Index (EEDI) of the subject vessel has achieved Phase 3 (30% reduction from the reference line) by application of an optimal hull shape

and latest energy saving technologies. This challenge will contribute to green environment by its eco-friendly performance.

5. Furthermore, the fuel oil consumption was further improved by the application of new electronically controlled MAN-B&W G-type engine, and a high efficiency propeller.

### PRINCIPAL PARTICULARS

Length (o.a.) .....	333.00 m	Deadweight.....	301,850
Breadth (mld.).....	60.00 m	Main engine .....	MAN-B&W 6G80ME-C10.5-HPSCR
Depth (mld.).....	29.35 m	Speed (service).....	14.5 knots
Draft (mld.).....	21.55 m	Complement.....	30
Gross tonnage.....	157,208	Classification .....	ABS
		Builder.....	JMU



# TAGA 312,306 DWT Crude Oil Carrier 7

[Contents](#)
[By Builder](#)
[By Ship Type](#)


## PRINCIPAL PARTICULARS

Length (o.a.) .....	338.92 m	Gross tonnage .....	160,453	Complement .....	34 + 10
Breadth (mld.) .....	60.00 m	Deadweight .....	312,306 t	Classification .....	Nippon Kaiji Kyokai (NK)
Draft (mld.) .....	21.05 m	Main engine .....	WinGD 7X82-B	Builder .....	Namura Shipbuilding Co., Ltd.